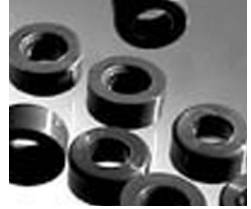
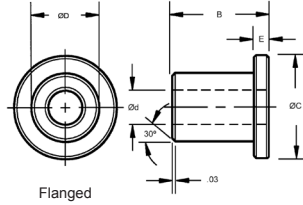
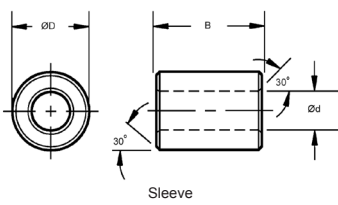


# THERMOPLASTIC BEARINGS

BORE SIZE	SHAFT SIZE	TYPE
1/8" TO 1/2"	.1250 TO .5000	SLEEVE AND FLANGED



SLEEVE STOCK NO.	FLANGED STOCK NO.	NOMINAL SIZES Ød	ØD	B	ØC	E (+0.1-.0055)	I.D. AFTER PRESS FIT		HOUSING BORE		SHAFT SIZE	
							MAX.	MIN.	MAX.	MIN.	MAX.	MIN.
B15-1	B16-1	1/8	1/4	1/8	.360	.047	.1280	.1262	.2515	.2510	.1250	.1241
B15-2	B16-2	1/8	1/4	3/16	.360	.047	.1280	.1262	.2515	.2510	.1250	.1241
B15-3	B16-3	1/8	1/4	1/4	.360	.047	.1280	.1262	.2515	.2510	.1250	.1241
B15-4	B16-4	1/8	1/4	3/8	.360	.047	.1280	.1262	.2515	.2510	.1250	.1241
B15-5	B16-5	3/16	1/4	1/4	.375	.032	.1905	.1887	.2515	.2510	.1875	.1866
B15-6	B16-6	3/16	1/4	3/8	.375	.032	.1905	.1887	.2515	.2510	.1875	.1866
B15-7	B16-7	3/16	1/4	1/2	.375	.032	.1905	.1887	.2515	.2510	.1875	.1866
B15-8	B16-8	3/16	5/16	3/16	.370	.047	.1905	.1887	.3140	.3135	.1875	.1866
B15-9	B16-9	3/16	5/16	1/4	.370	.047	.1905	.1887	.3140	.3135	.1875	.1866
B15-10	B16-10	3/16	5/16	5/16	.370	.047	.1905	.1887	.3140	.3135	.1875	.1866
B15-11	B16-11	3/16	5/16	3/8	.370	.047	.1905	.1887	.3140	.3135	.1875	.1866
B15-12	B16-12	3/16	5/16	1/2	.370	.047	.1905	.1887	.3140	.3135	.1875	.1866
B15-13	B16-13	1/4	5/16	1/4	.438	.032	.2539	.2516	.3140	.3135	.2500	.2491
B15-14	B16-14	1/4	5/16	3/8	.438	.032	.2539	.2516	.3140	.3135	.2500	.2491
B15-15	B16-15	1/4	5/16	1/2	.438	.032	.2539	.2516	.3140	.3135	.2500	.2491
B15-16	B16-16	1/4	3/8	3/16	.560	.047	.2539	.2516	.3765	.3760	.2500	.2491
B15-17	B16-17	1/4	3/8	1/4	.560	.047	.2539	.2516	.3765	.3760	.2500	.2491
B15-18	B16-18	1/4	3/8	5/16	.560	.047	.2539	.2516	.3765	.3760	.2500	.2491
B15-19	B16-19	1/4	3/8	3/8	.560	.047	.2539	.2516	.3765	.3760	.2500	.2491
B15-20	B16-20	1/4	3/8	1/2	.560	.047	.2539	.2516	.3765	.3760	.2500	.2491
B15-21	B16-21	1/4	3/8	5/8	.560	.047	.2539	.2516	.3765	.3760	.2500	.2491
B15-22	B16-22	1/4	3/8	3/4	.560	.047	.2539	.2516	.3765	.3760	.2500	.2491
B15-23	B16-23	5/16	3/8	1/4	.500	.032	.3164	.3141	.3765	.3760	.3125	.3116
B15-24	B16-24	5/16	3/8	3/8	.500	.032	.3164	.3141	.3765	.3760	.3125	.3116
B15-25	B16-25	5/16	3/8	1/2	.500	.032	.3164	.3141	.3765	.3760	.3125	.3116
B15-26	B16-26	5/16	7/16	3/16	.560	.062	.3164	.3141	.4390	.4385	.3125	.3116
B15-27	B16-27	5/16	7/16	1/4	.560	.062	.3164	.3141	.4390	.4385	.3125	.3116
B15-28	B16-28	5/16	7/16	5/16	.560	.062	.3164	.3141	.4390	.4385	.3125	.3116
B15-29	B16-29	5/16	7/16	3/8	.560	.062	.3164	.3141	.4390	.4385	.3125	.3116
B15-30	B16-30	5/16	7/16	1/2	.560	.062	.3164	.3141	.4390	.4385	.3125	.3116
B15-31	B16-31	5/16	7/16	5/8	.560	.062	.3164	.3141	.4390	.4385	.3125	.3116
B15-32	B16-32	5/16	7/16	3/4	.560	.062	.3164	.3141	.4390	.4385	.3125	.3116
B15-33	B16-33	3/8	7/16	1/4	.563	.032	.3789	.3766	.4390	.4385	.3750	.3741
B15-34	B16-34	3/8	7/16	3/8	.563	.032	.3789	.3766	.4390	.4385	.3750	.3741
B15-35	B16-35	3/8	7/16	1/2	.563	.032	.3789	.3766	.4390	.4385	.3750	.3741
B15-36	B16-36	3/8	1/2	3/16	.625	.062	.3789	.3766	.5015	.5010	.3750	.3741
B15-37	B16-37	3/8	1/2	1/4	.625	.062	.3789	.3766	.5015	.5010	.3750	.3741
B15-38	B16-38	3/8	1/2	5/16	.625	.062	.3789	.3766	.5015	.5010	.3750	.3741
B15-39	B16-39	3/8	1/2	3/8	.625	.062	.3789	.3766	.5015	.5010	.3750	.3741
B15-40	B16-40	3/8	1/2	1/2	.625	.062	.3789	.3766	.5015	.5010	.3750	.3741
B15-41	B16-41	3/8	1/2	5/8	.625	.062	.3789	.3766	.5015	.5010	.3750	.3741
B15-42	B16-42	3/8	1/2	3/4	.625	.062	.3789	.3766	.5015	.5010	.3750	.3741
B15-43	B16-43	3/8	1/2	1	.625	.062	.3789	.3766	.5015	.5010	.3750	.3741
B15-44	B16-44	7/16	9/16	3/8	.687	.062	.4422	.4395	.5635	.5625	.4375	.4365
B15-45	B16-45	7/16	9/16	1/2	.687	.062	.4422	.4395	.5635	.5625	.4375	.4365
B15-46	B16-46	1/2	5/8	1/4	.875	.062	.5047	.5020	.6260	.6250	.5000	.4990
B15-47	B16-47	1/2	5/8	5/16	.875	.062	.5047	.5020	.6260	.6250	.5000	.4990
B15-48	B16-48	1/2	5/8	3/8	.875	.062	.5047	.5020	.6260	.6250	.5000	.4990
B15-49	B16-49	1/2	5/8	1/2	.875	.062	.5047	.5020	.6260	.6250	.5000	.4990
B15-50	B16-50	1/2	5/8	5/8	.875	.062	.5047	.5020	.6260	.6250	.5000	.4990
B15-51	B16-51	1/2	5/8	3/4	.875	.062	.5047	.5020	.6260	.6250	.5000	.4990
B15-52	B16-52	1/2	5/8	1	.875	.062	.5047	.5020	.6260	.6250	.5000	.4990